

Retail Merchandising Center



Retail Merchandising Center

EFFICIENT PLANOGRAM MAINTENANCE & IT-INTEGRATION

PLANOGRAMMING CHALLENGES

If you're dealing with many planograms, you're facing a number of challenges:

- ✓ **Version control.** Which planograms are the active ones? What is the status of updates?
- ✓ **Data integrity.** Is the product data consistent & up-to-date in all planograms?
- ✓ **Efficiency.** How can I implement assortment changes quickly, without taking too much time?

These challenges become even bigger when you want to:

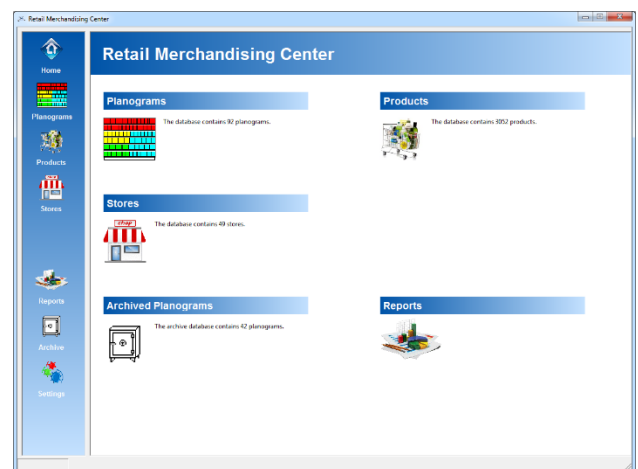
- ✓ Link planograms to stores and/or floorplans.
- ✓ Increase efficiencies in distribution of your planograms.
- ✓ Integrate closely with other IT-systems and processes to exchange data.

RETAIL MERCHANDISING CENTER

Worry no longer! A powerful yet affordable solution exists: **Retail Merchandising Center**. Working in parallel with **Retail Shelf Planner** and optionally **Retail Floor Planner**, this solution provides the answers to all of the above-mentioned challenges!

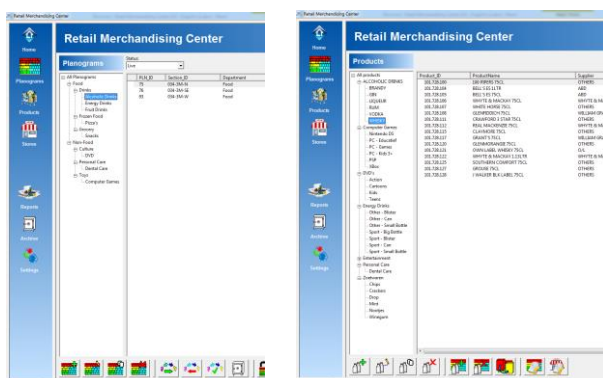
By allowing **Retail Shelf Planner** and **Retail Floor Planner** to store your planograms and floorplans in a central relational database repository, **Retail Merchandising Center** offers a powerful set of capabilities to manage and maintain these planograms and floorplans in a much more efficient way.

On top of that, with all that data being stored in a central, structured way, we're also opening up a wealth of information through reports and analyses.

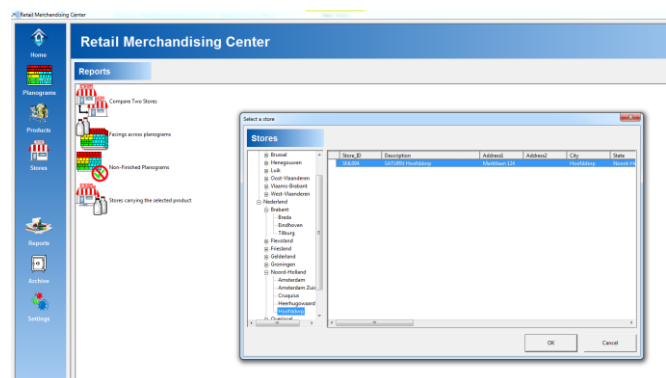


TAILORED TO YOUR NEEDS

Retail Merchandising Center has been developed knowing that not every company and person is the same. It is therefore, for example, possible to switch between English, French, German, Italian and Dutch. In addition, the storage as well as the display of planograms, products, stores and floorplans are structured the way your business is organized:



Planogram & product hierarchies reflecting your business structure



Standard & custom reports/analyses with dynamic prompting

The software ships with a set of standard reporting and analysis templates, but these can easily be expanded with analyses that are specifically tailored to your business. The templates can include dynamic prompting to make the number of possibilities to get powerful business insights even larger.



PLANOGRAM LIFE-CYCLE / WORKFLOW

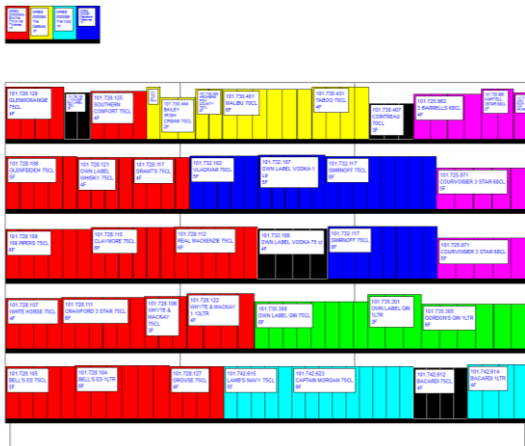
At the heart of the system, we've implemented the concept of a planogram life-cycle. This way you are sure that once a planogram has gone "live", i.e. it has been released for implementation into stores, it is impossible to make accidental changes to it.

When someone initiates a review, and starts adding or removing products from the assortment, the system automatically creates copies of the original planograms, securing the live/active ones. Only after consciously moving a new planogram proposal through various "sign-off" stages, can it become the new active plan, moving the previous one into the archive, offering a simple, yet clear workflow that protects the integrity of your planograms.

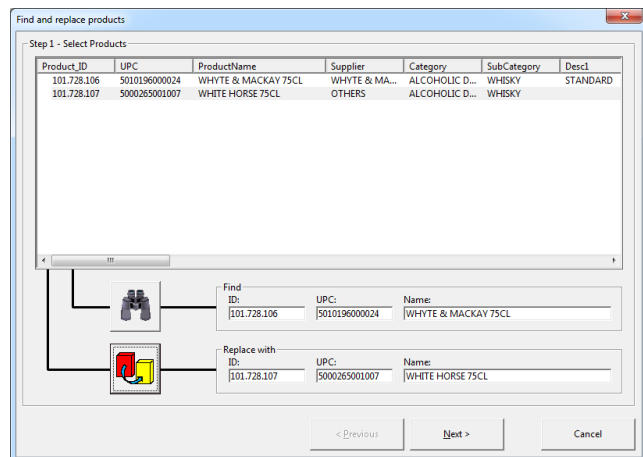
EFFICIENT MAINTENANCE

Retail Merchandising Center offers various powerful capabilities to make the maintenance of planograms a much more efficient, and less time-consuming task:

- ✓ Change "generic" product data such as UPC, name, supplier, physical dimensions, ... only once, and all planograms in which the product is listed, are updated at once!
- ✓ List one or more (new) products in a series of planograms with just a few clicks. Optionally place them on a temporary shelf, so that you (or someone else) can easily drag and drop them into the correct location.
- ✓ Quickly delist products, or mark them for easy identification during planogram updates.
- ✓ Simply execute a "find & replace" when you have one of those "in and out" assortment updates.



New products on a temp shelf & to-be-delisted products marked



Find & Replace a product

ASSIGN PLANOGRAMS TO STORES

Even if you don't create store-specific planograms, **Retail Merchandising Center** will allow you to link your generic/cluster-level planograms to individual stores. This way you can increase efficiencies in the planogram distribution process, as well as create new insights like distribution of a product, or share of shelf space by brand, supplier, ... across the total retail-banner

LINK WITH OTHER SYSTEMS AND PROCESSES

Importing data from other IT-systems into the planogramming process, or exporting planogram data for use in e.g. ERP or logistical systems has never been easier as **Retail Merchandising Center** uses an industry strength relational database as the back-end repository. Depending on the requirements from your IT-department, this can be either Microsoft SQL Server, or Oracle MySQL.





Retail Merchandising Center

EFFICIENT PLANOGRAM MAINTENANCE & IT-INTEGRATION

Global Retail Business Solutions is a Belgium based company with 25 years of experience in data analysis, Category Management, assortment-, floor- and space-planning. Our software and services are delivered directly and through partners to clients around the globe.

In those 25 years we have worked with hundreds of local and international retailers and suppliers in Food and Non-Food, guiding them in the implementation and successful use of specific software applications supporting their sales, marketing, buying and merchandising departments.

Global Headquarters

Global Retail Business Solutions
Grez-Doiceau (Belgium)
+32-479-290.351
erwin@retailmerchandisingcenter.com

Sweden/Norway/Denmark

Retail Business Partner Nordic
Vaxholm (Sweden)
+46-70-553.2610
marina@retailmerchandisingcenter.com

Italy

GRBS Italia
Milan
+39-335-748.3903
salvatore@retailmerchandisingcenter.com

Malaysia/Singapore/Indonesia

Intrack Market Services
Petaling Jaya (Malaysia)
+60-3-7491.0681
ck@retailmerchandisingcenter.com

Australia

Benjam Consulting
Melbourne
+61-400-615.736
daryl@retailmerchandisingcenter.com

Canada

Solutions ASO
Montreal (Quebec)
+1-514-919.8978
jp@retailmerchandisingcenter.com

Brazil

Figueira Costa Consultoria Empresarial
Florianópolis
+553-868-333.119
raphael@retailmerchandisingcenter.com

Netherlands

GRBS NL
Hoofddorp
+31-637-198.183
fu@retailmerchandisingcenter.com

Finland

Tilatehdas
Helsinki
+358-50-300.4525
heini@retailmerchandisingcenter.com

Ireland

ShelfStock
Dublin
+353-868-333.119
gerry@retailmerchandisingcenter.com

South-Korea

RMD Solution
Seoul
+82-70-4210.2200
suhyun.kim@retailmerchandisingcenter.com

United States

CRS Consulting
Philadelphia
+1-215-327.0490
dennis@retailmerchandisingcenter.com

Mexico

DIGINS Mexico
Monterrey
+52-55-5414.8990
aldo@retailmerchandisingcenter.com

Chile & Rest of South America

RETAILATAM
Santiago (Chile)
+56-9-7378.5279
daniel@retailmerchandisingcenter.com

Belgium & France

GRBS Belgium
Grez-Doiceau (Belgium)
+32-488-145.084
stef@retailmerchandisingcenter.com

Latvia/Estonia/Lithuania

Catman.lv
Riga (Latvia)
+371-26-551.835
andrejs@retailmerchandisingcenter.com

Pakistan

Point Retail
Lahore
+92-346-786.0101
rashid@retailmerchandisingcenter.com

Thailand & Rest of Asia

MIAdvisory
Bangkok (Thailand)
+66-2-634.5498
randy@retailmerchandisingcenter.com

United States & Canada

Northern Trade Works
Edmonton
+1-587-987.0910
aaron@retailmerchandisingcenter.com

Costa Rica & Central America

RETAILATAM / Gravitas Cons. Network
San José (Costa Rica)
+506-8837.9286
jorge@retailmerchandisingcenter.com



<https://retailmerchandisingcenter.com>



Global Retail Business Solutions
International retail and category management services

Global Retail Business Solutions
International retail and category management services